

# Portable HD Industrial Endoscope

Inspector Pro HD+Touchscreen Revolution





2021/06/01 08:56:12



2021/06/01 09:12:12



2021-06-01 09:39:41



Your Complete Source for  
Testing Equipment Since 1969!

[www.BergEng.com](http://www.BergEng.com)  
Berg Engineering & Sales Company, Inc.

1-847-577-3980  
Info@BergEng.com



# More details More possibilities

## Inspector Pro Portable HD industrial endoscope

Today, visual inspection is more important than ever to reduce the risk of occurrence, serious equipment failure and improve uptime, because the more you know about your assets, the better chance you have of spotting potential problems before they affect productivity issues.

The latest Inspector Pro all-in-one handheld high-definition videoscope provides superior accuracy in even the toughest inspections for the highest probability of detection of defects such as common pitting, cracking and corrosion.



Your Complete Source for  
Testing Equipment Since 1969!

[www.BergEng.com](http://www.BergEng.com)  
Berg Engineering & Sales Company, Inc.

1-847-577-3980  
Info@BergEng.com

# The latest technology HD Resolution Interchangeable probes

## HD with the latest technology Video imaging components

Equipped with the latest technology of high-definition video imaging components, high-power light source and excellent vision processor to provide you with clearer still pictures and videos, helping operators to make faster and more accurate defect determination.

## Intuitive Interactive software

Interactive software specially tailored for endoscopic visual inspection  
Graphical button display of the most commonly used functions, convenient for operators to quickly find the desired functions and reduce learning costs. Simple to use and practical.

## Advanced probe Interchangeable technology

The probe can be replaced quickly according to different working conditions. The diameter of the probe are available of 1.0mm, 1.6mm, 2.4mm, 2.8mm 4mm and 6mm. Different working lengths are available from 2M to 10M. Save equipment purchase costs and improve after-sales service efficiency



VGA image quality

HD image quality

600 pixels



800 pixels



720 pixels

1280 pixels



Your Complete Source for  
Testing Equipment Since 1969!

[www.BergEng.com](http://www.BergEng.com)  
Berg Engineering & Sales Company, Inc.

1-847-577-3980  
Info@BergEng.com



# Powerful and versatile

Vary expansion, built-in foreign object grasping tool channel  
 Ultraviolet fluorescence probe  
 specially designed for complex working conditions

Probe quick change design  
 adaptive for different inspection conditions and challenges

- Full-screen touch design with built-in full keyboard for easy annotation and report generation
- Ergonomically designed key layout for easy understanding and operation
- Built-in wifi and bluetooth for wireless data transmission and remote sharing (optional)
- Built-in measurement software, which can measure geometric data such as length, polyline, area, etc.

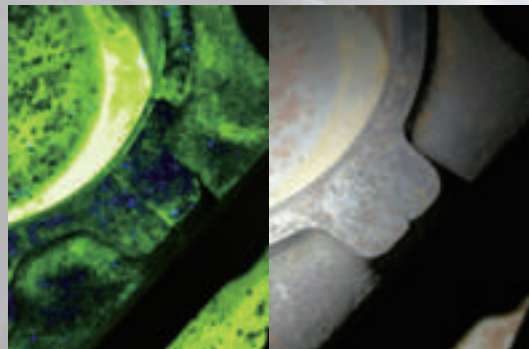
## UV Probe

In special non-destructive testing applications combined with penetration and magnetic particle inspection customized UV LED (UV365nm) illumination probes can be selected.

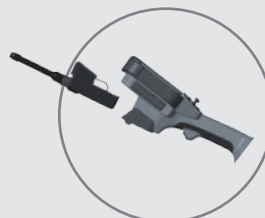


## Built-in foreign object grasping tool channel

Eliminating foreign objects such as screws and falling blocks in key equipment such as engines is critical to safe operation. Therefore, combined with the proprietary built-in manipulator channel probe, it can effectively enter the problem area, find excess objects more efficiently, and use the integrated foreign object tool to eliminate them.



All interface  
 HDMI interface  
 High-definition video output interface Can be connected to a large screen for sharing  
 USB3.0 interface Used to connect peripherals and flash disk for efficient and fast data transmission  
 trigger photo design  
 take photos and videos as soon as possible



Probe interchangeable design  
 The specially designed mechanical structure can be quickly replaced with different functions. Probes of different diameters and lengths are used to meet the needs of different detection conditions, such as infrared IR or ultraviolet UV probes, saving probe purchase and maintenance costs.



Special all-in-one battery design  
 Small and portable integrated battery design, using a specially designed mechanical structure can be quickly installed and disassembled, saving the time of battery replacement, independent charging design Built-in high-efficiency lithium-ion battery The working time can reach more than 4 hours.

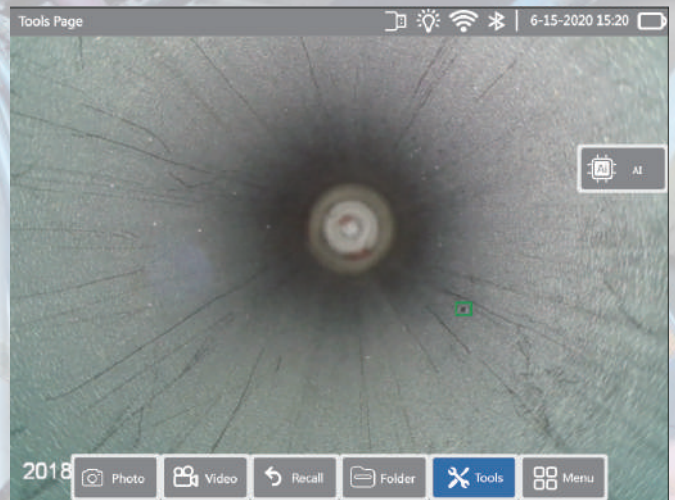


## Powerful and Portable

Inspector Pro has built-in Intel high-performance processor, large-capacity high-speed memory and a 6.5-inch IPS wide-angle high-definition touch LCD screen to easily face with various complex tasks. The whole unit with durable and ergonomically designed handheld operation, which is easy to operate, easy to store and carry.

## AI defect-assisted identification

Thanks to the software's powerful algorithms and visual learning capabilities  
The system can intelligently judge defects and color them  
Remind the operator to make an auxiliary judgment  
Reduce operator workload



## High power LED with Fiber output

The design of high-power LED light source ensures the light needs of visual inspection in large spaces. For example: the interior of large wind turbine gearboxes or the interior of gas turbines, compared with the traditional LED front installed technology.



## Excellent depth of field Lens design

The industry's leading customized depth of field design can be tailored to different depth of field according to specific application requirements. For example: the depth of field can observe more tooth surface and the inside of the bearing roller, without cumbersome replacement of different depths of field Optical tip adapters.





## Flexible one-finger articulation technology

The latest single-finger articulation technology is easy to operate while ensuring precise control of the guidance. Compared with the traditional articulation technology, it is more accurate and stable. The new design ensures stable performance of the articulation mechanism system, which is easy to repair and reduces the maintenance cost.



## External retrieval tools kit Wide selection of tools prevent problems before they happen

Although we take many measures to avoid foreign objects produced and left behind, but the facts tell us that the foreign objects Generation tends to occur in the worst-case scenario, foreign objects Can be anything from a small fastener to a drop mobile phone when a foreign object is produced, it may proo Unpredictable danger and destructiveness bringing huge economic loss.



## Field-based industrial design Maintenance cost control

The whole unit is designed with industrial-grade materials and durability  
Perfectly deal with harsh industrial field testing environment  
At the same time reduce the maintenance cost of the equipment later  
Reduce the difficulty and risk of maintenance personnel



# Ready for Different Industrial sector

Reduce potential downtime  
for maintenance and personal injury  
Provide maximum value for asset managers



## Aerospace

Turbine and engine  
Combustion chamber  
High and low pressure  
Wing, fuel tank  
Synthetic materials  
and components, etc.



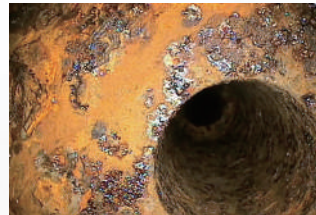
## Oil&Gas

Boiler plant  
pressure vesse  
Pressure pipeline  
Reactor, heat exchanger



## Power generation

Foreign matter grabbing  
Turbine blade inspection  
Generator internal inspection  
Main steam pipeline,  
condenser



## More industry applications

Water pump  
Engine  
Generator  
Gearbox  
Pipeline  
Turbine blades  
Compressors



Wide accessories options  
Perfect for a variety of industrial environments

Professional modular design  
No installation required, immediately enter the detection state



High-capacity modular battery Quick change design



Probe storage protection design



Shockproof Wheeled Trolley Case



Your Complete Source for  
Testing Equipment Since 1969!

[www.BergEng.com](http://www.BergEng.com)  
Berg Engineering & Sales Company, Inc.

1-847-577-3980  
Info@BergEng.com



# Technical Specifications

## Working environment

Probe working temperature	-25 to 100 °C , Built-in over temperature alarm function (optional)
Unit working temperature	-20 to 46 °C
System storage temperature	-25 to 60 °C
Relative humidity	95% maximum non-condensing
Dustproof and waterproof	Probe water resistance:IP67, 1.0bar, 10.2m water depth;unit waterproof:IP65 Operates in rainy conditions, not submersible

## Imaging system

Probe diameter and length	Diameter 1.2mm,1.6mm,1.8mm, 2.4mm, 2.8mm, 4.0 mm, 6.0mm,8mm / Probe length 2M,3M,4.5M,6M,8M , 10M customized requirements acceptable.
Imaging components	1/10" color imager (4.0mm) 1/6" color imager (6.0mm)
Number of pixels	HD resolution 1280 x 720- 921,600.00 pixels
Lens depth of field	DOF:5mm-inf, FOV:120° , customized requirements acceptable.
Protective material	Titanium alloy housing, four layers of tungsten wire braid and laser welding technology

## Handheld System

Probe interchangeable Technology	Probes interchangeable with different diameters, working lengths, DOV, FOV, and viewing angles, which can adapt to different applications
System weight	less than 1.7 kg
Material	Engineering plastic body, polyurethane housing, anti-collision elastic rubber buffer material
LCD Monitor	Integrated 6.5-inch IPS high-definition color daylight LCD screen (resolution XGA 1024×768), clearly readable under sunlight High sensitivity capacitive touch screen
Joystick operation	360° all-round continuous articulation, the articulation angle is 100° to 160° according to the length of the probe
Key design	Software shortcut operation, ergonomic layout, quick start, photo, video, brightness adjustment and other key settings
Inner storage	Built-in 128 G SSD high-speed solid state drive
Interface	2xUSB 3.0
Video out	High-resolution HDMI interface output
Lighting output	Manual or automatic adjustment
Lighting source type	Fixed high output and high power LED lighting source with fiber output
Long exposure	Automatic
White balance	Default setting or user-defined adjustable; image saturation and contrast: custom adjustable

## Power supply system

Lithium battery	11.1 V 7000 mAh 3 hours working time Support working while charging
-----------------	---

## Power

AC	100-240 VAC, 50-60 Hz
DC	12.6V, 5 A

## System software

Operating system	Embedded multitasking operating system
User Interface	Graphical operation interface, key operation, full-screen touch operation
File management	Built-in file management system, which can create, copy, delete, rename and other operations
Software function	Photo, video Recording, Image Freeze, Image Zoom, Rotate, Flip, Video Playback, long exposure, Invert, Color Adjustment, Annotation, Split Screen Intelligent AI defect-assisted identification, defect size measurement, etc.
digital zoom	5x step zoom in and out
Image format	JPEG resolution:H1280xV720
Video format	AVI resolution:H1280xV720
Text annotation	Built-in full keyboard input
Graphic annotation	Arrow or customer drawing
Image Saturation Contrast	Customer adjustable
software upgrade	System upgrade via USB interface
Language	Multi-language options

All specifications are subject to change without notice due to technical reasons



Berg Engineering & Sales Company, Inc. 3893  
Industrial Ave., Rolling Meadows, IL 60008

1-847-577-3980

[www.BergEng.com](http://www.BergEng.com)

[info@BergEng.com](mailto:info@BergEng.com)



**RVI**  
**Infinity**  
**Innovation**



*Your Complete Source for  
Testing Equipment Since 1969!*

[www.BergEng.com](http://www.BergEng.com)  
Berg Engineering & Sales Company, Inc.

1-847-577-3980  
[Info@BergEng.com](mailto:Info@BergEng.com)

INNOVATION LINKEDIN GMBH is a German company specializing in providing professional visual solutions for inspection and exploration of confined spaces, covering: industrial video endoscopes, hand-held video endoscopes, industrial pipeline endoscopes, container inspection remote vision systems, foreign objects and excess objects grasping tools industrial inspection crawler robots, collisionable drone systems, etc. Our professional and innovative solutions can help industrial companies and inspectors successfully reduce downtime, inspection costs and worker risk we have provided thousands of solutions for different industries and customers, where are located in different countries and regions.

